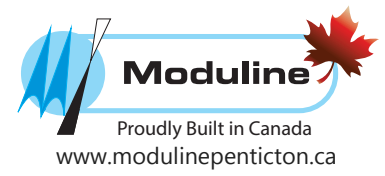
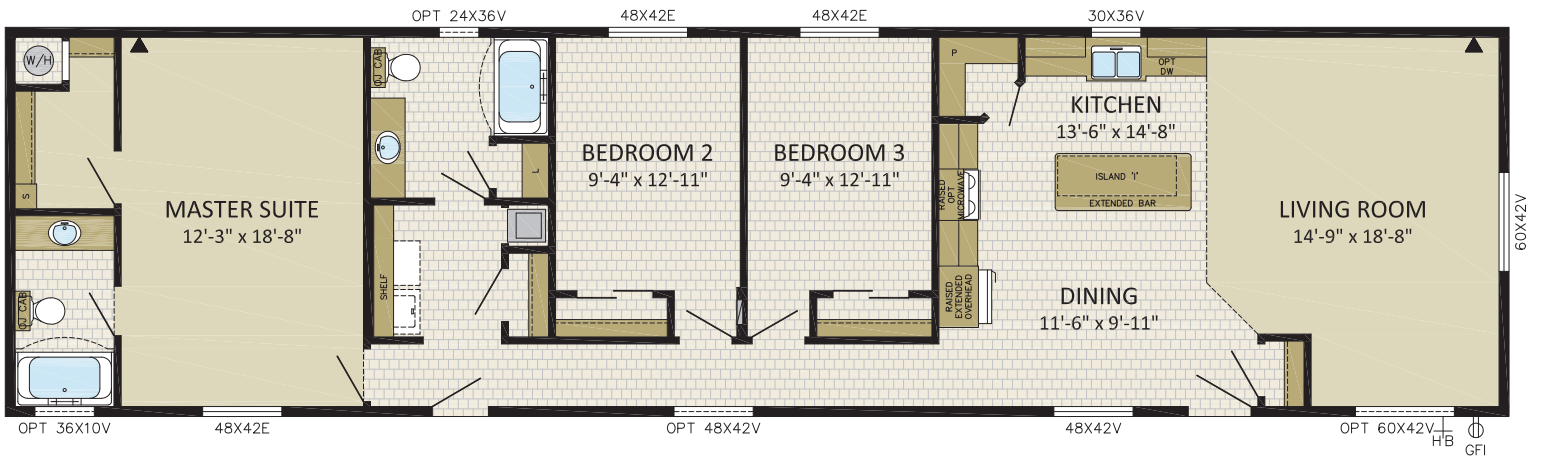


**cornerstone**  
single sections  
**20' Wide Homes**



**FAIRHAVEN**  
3 BDRM, 2 BATH, FRONT LR  
**198CO7601**  
19'-8" x 76' | 1,495 sqft



P.O. Box 190 1175 Railway Street Penticton, B.C. V2A 6J9 Phone (250) 493-0122 Fax (250) 493-0133 www.modulinepenticton.ca

*In a continued effort to meet the challenges of product improvement, we reserve the right to modify plans, specifications and features without prior notice.*

*Some homes may show optional items which are not standard. Please consult your dealer representative for details. Square footage and room sizes are approximate.*